

C4

CATALOG
2019



FINS

300 FINS LINE

300 HYPERTECH line

ALLBLACK HT	pag 4
SILVERSEA HT	pag 4
VOLARE HT	pag 5
VOLARE SPEARFISHING HT	pag 5

300 PERFORMANCE line

REDFOX	pag 6
DEEP SPEARO.....	pag 6

300 SUPERFORCE line

INDIAN.....	pag 8
INDIAN CAMO MED	pag 8
INDIAN CAMO OCEAN.....	pag 9

300 PLASTIC line

SURFER	pag 10
--------------	--------

ANATOMICAL FINS LINE

MST HYPERTECH line

MUSTANG HT	pag 12
------------------	--------

400 FINS LINE

400 PERFORMANCE line

GECKO.....	pag 13
------------	--------

400 SUPERFORCE line

FAST.....	pag 14
-----------	--------

400 PLASTIC line

DOLPHIN	pag 15
---------------	--------

BLADES

HYPERTECH line

REDFALCON HT	pag 16
BLUEFLAP HT	pag 16

300 SUPERFORCE line

FALCON	pag 17
--------------	--------

FINS ACCESSORIES

KIT ADAPTER 300/400	pag 19
KIT WATER RAIL	pag 19

FOOT POCKETS

FOOT POCKETS MUSTANG

FOOT POCKETS MUSTANG.....	pag 18
---------------------------	--------

FOOT POCKETS 300

FOOT POCKETS 300	pag 18
------------------------	--------

FOOT POCKETS 400

FOOT POCKETS 400	pag 19
------------------------	--------

MASK

MASK PLASMA.....	pag 20
------------------	--------

SNORKEL

SNORKEL MISTRAL.....	pag 20
----------------------	--------

SPEARGUN

SPEARGUN GRAPHITE	pag 21
SPEARGUN URUKAY	pag 21

BAGS

TOP BAG FOR FINS "VOLARE"	pag 22
STANDARD BAG FOR FINS	pag 22

BELTS

SILICONE BELTS INOX BUCKLE	pag 23
SILICONE BELT NYLON BUCKLE	pag 23

300 HYPERTECH LINE OPC4ALBHT

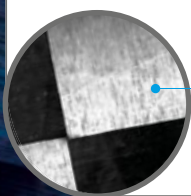
MADE IN ITALY

ALLBLACK HT

Light and fast. This result is achieved thanks to the use of innovative and very light 300 foot pockets combined with the use of the finest carbon fiber HYPERTECH for the blades. The blade's top flap guarantees the maximum performance in the water.

DATA SHEET

MATERIAL	TR50 Hypertech
BLADE DIMENSION	873x195 mm
BLADE HARDNESS	20 super soft - 25 soft - 30 medium - 40 hard
WATER RAILS	Tunnel (patent pending) - Color: black
FINS ANGLE	29°+3°=32°
ENDING BLADE	flap
FINS WEIGHT	Starting from 600 gr
FOOT POCKET	Mod. 300 - Color: black
FOOT POCKET WEIGHT	316 gr circa in size 40/41
FOOT POCKETS SIZES	
European sizes	36/37 - 38/39 - 40/41 - 42/43 - 44/45 46/47 - 48/49
US/Canada sizes	4/4.5 - 5.5/6 - 7/8 - 8.5/9 - 10/11 11.5/12.5 - 13/14


CARBON FIBER
TR50 HYPERTECH

300 HYPERTECH LINE OPC4SSHT

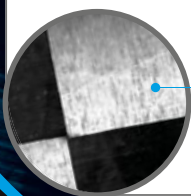
MADE IN ITALY

SILVERSEA HT

Light and versatile. This result is achieved thanks to the use of innovative and very light 300 foot pockets combined with the use of the finest carbon fiber HYPERTECH for the blades. The unique shape of the top part of the blade allows these fins to be the right choice for all types of use.

DATA SHEET

MATERIAL	TR50 Hypertech
BLADE DIMENSION	873x195 mm
BLADE HARDNESS	20 super soft - 25 soft - 30 medium - 40 hard
WATER RAILS	Tunnel (patent pending) - Color: black
FINS ANGLE	29°+3°=32°
ENDING BLADE	concave
FINS WEIGHT	Starting from 600 gr
FOOT POCKET	Mod. 300 - Color: black
FOOT POCKET WEIGHT	316 gr circa in size 40/41
FOOT POCKETS SIZES	
European sizes	36/37 - 38/39 - 40/41 - 42/43 - 44/45 46/47 - 48/49
US/Canada sizes	4/4.5 - 5.5/6 - 7/8 - 8.5/9 - 10/11 11.5/12.5 - 13/14

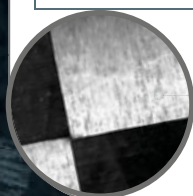

CARBON FIBER
TR50 HYPERTECH


VOLARE HT

Aquaticity and lightness. Lightweight and highly performing, VOLARE fins meet the needs of the most technical freedivers. This result is achieved thanks to the use of the innovative and very light 300 foot pockets combined with the use of the finest HYPERTECH REFLECT carbon fiber for the blades. The carbon fiber used to manufacture these blades is combined with an aluminum fiber which makes the freediver more visible in the water.

DATA SHEET

MATERIAL	TR50 Hypertech Reflect
BLADE DIMENSION	1000x197 mm
BLADE HARDNESS	25 soft - 30 medium
WATER RAILS	constant h10 - Color: white
FINS ANGLE	29°+3°=32°
ENDING BLADE	flap
FINS WEIGHT	Starting from 600 gr
FOOT POCKET	Mod. 300 - Color: white
FOOT POCKET WEIGHT	316 gr circa in size 40/41
FOOT POCKETS SIZES	
European sizes	36/37 - 38/39 - 40/41 - 42/43 - 44/45 46/47 - 48/49
US/Canada sizes	4/4.5 - 5.5/6 - 7/8 - 8.5/9 - 10/11 11.5/12.5 - 13/14



CARBON FIBER
TR50 HYPERTECH REFLECT



VOLARE SPEARFISHING

Depth and performance. Based on the exciting performances of the VOLARE HT fins dedicated to pure freedivers, we have created high performing fins dedicated to deep spearfishermen.

DATA SHEET

MATERIAL	TR50 Hypertech
BLADE DIMENSION	1000x197 mm
BLADE HARDNESS	25 soft - 30 medium
WATER RAILS	constant h10 - Color: black
FINS ANGLE	29°+3°=32°
ENDING BLADE	flap
FINS WEIGHT	Starting from 600 gr
FOOT POCKET	Mod. 300 - Color: black
FOOT POCKET WEIGHT	316 gr circa in size 40/41
FOOT POCKETS SIZES	
European sizes	36/37 - 38/39 - 40/41 - 42/43 - 44/45 46/47 - 48/49
US/Canada sizes	4/4.5 - 5.5/6 - 7/8 - 8.5/9 - 10/11 11.5/12.5 - 13/14



CARBON FIBER
TR50 HYPERTECH

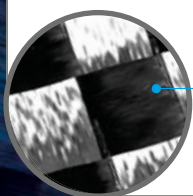


REDFOX

Light and compact. This result is achieved thanks to the use of innovative and very light 300 foot pockets combined with the use of the finest carbon fiber T700 PERFORMANCE for the blades. The unique shape of the blade and the carbon yarn used to make these blades make them particularly strong and suitable for spearfishing.

DATA SHEET

MATERIAL	T700 Performance
BLADE DIMENSION	870x195 mm
BLADE HARDNESS	25 soft - 30 medium - 40 hard
WATER RAILS	Costant h10 - Color: black
FINS ANGLE	29°+3°=32°
ENDING BLADE	concave NACA
FINS WEIGHT	Starting from 600 gr
FOOT POCKET	Mod. 300 - Color: black
FOOT POCKET WEIGHT	316 gr circa in size 40/41
FOOT POCKETS SIZES	
European sizes	36/37 - 38/39 - 40/41 - 42/43 - 44/45 46/47 - 48/49
US/Canada sizes	4/4.5 - 5.5/6 - 7/8 - 8.5/9 - 10/11 11.5/12.5 - 13/14



CARBON FIBER
T700 PERFORMANCE

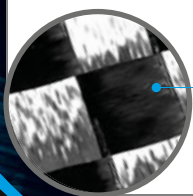
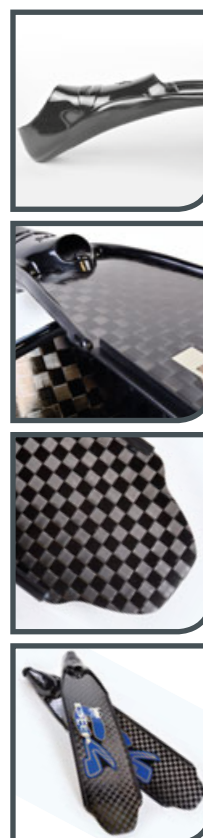


DEEP SPEARO

Light and deep. This result is achieved thanks to the use of the innovative and very light 300 foot pockets combined with the use of the finest carbon fiber T700 PERFORMANCE for the blades. The particular shape of the blade with the top Flap and the carbon yarn used to make these blades make them particularly strong and suitable for deep spearfishing.

DATA SHEET

MATERIAL	T700 Performance
BLADE DIMENSION	869x197 mm
BLADE HARDNESS	25 soft - 30 medium - 40 hard
WATER RAILS	costanti h10 - Colore: nero
FINS ANGLE	29°+3°=32°
ENDING BLADE	flap
FINS WEIGHT	Starting from 600 gr
FOOT POCKET	Mod. 300 - Color: black
FOOT POCKET WEIGHT	316 gr circa in size 40/41
FOOT POCKETS SIZES	
European sizes	36/37 - 38/39 - 40/41 - 42/43 - 44/45 46/47 - 48/49
US/Canada sizes	4/4.5 - 5.5/6 - 7/8 - 8.5/9 - 10/11 11.5/12.5 - 13/14



CARBON FIBER
T700 PERFORMANCE





300 T700 SUPERFORCE LINE OPC4IN

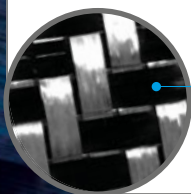
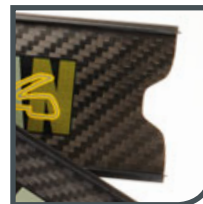
MADE IN ITALY

INDIAN

Born for the adventure. INDIAN are the most versatile fins in our catalog. The reduced length of the blades makes these fins strong, easy to use and suitable for all uses. They feature our innovative and lightweight 300 foot pockets and blades made with T700 Superforce carbon fiber.

DATA SHEET

MATERIAL	T700 Superforce
BLADE DIMENSION	786x190 mm
BLADE HARDNESS	25 soft - 30 medium - 40 hard
WATER RAILS	constant h10
FINS ANGLE	29°+3°=32°
ENDING BLADE	concave NACA
FINS WEIGHT	Starting from 600 gr
FOOT POCKET	Mod. 300 - Color: black
FOOT POCKET WEIGHT	316 gr circa in size 40/41
FOOT POCKETS SIZES	
European sizes	36/37 - 38/39 - 40/41 - 42/43 - 44/45 46/47 - 48/49
US/Canada sizes	4/4.5 - 5.5/6 - 7/8 - 8.5/9 - 10/11 11.5/12.5 - 13/14



CARBON FIBER
T700 SUPERFORCE


300 T700 SUPERFORCE LINE OPC4INCM
NEW

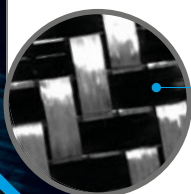
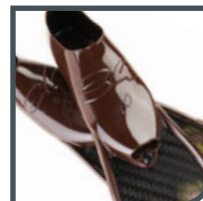
MADE IN ITALY

INDIAN CAMO MED

Light and camouflaged. The INDIAN Camo fins are the camouflaged version of the INDIAN fins. Available in the "MED" version in brown camouflage and "OCEAN" version in blue camouflage.

DATA SHEET

MATERIAL	T700 Superforce mimetic brown
BLADE DIMENSION	786x190 mm
BLADE HARDNESS	25 soft - 30 medium - 40 hard
WATER RAILS	Constant h10
FINS ANGLE	29°+3°=32°
ENDING BLADE	concave NACA
FINS WEIGHT	Starting from 600 gr
FOOT POCKET	Mod. 300 - Color: brown
FOOT POCKET WEIGHT	316 gr circa in size 40/41
FOOT POCKETS SIZES	
European sizes	36/37 - 38/39 - 40/41 - 42/43 - 44/45 46/47 - 48/49
US/Canada sizes	4/4.5 - 5.5/6 - 7/8 - 8.5/9 - 10/11 11.5/12.5 - 13/14



CARBON FIBER
T700 SUPERFORCE



300 T700 SUPERFORCE LINE OPC4INOM **NEW**

MADE IN ITALY

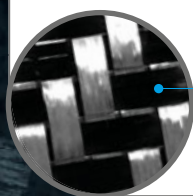
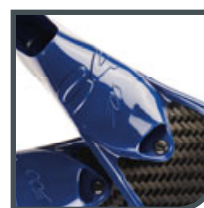
INDIAN CAMO OCEAN

Light and camouflaged. The INDIAN Camo fins are the camouflaged version of the INDIAN fins.

Available in the "MED" version in brown camouflage and "OCEAN" version in blue camouflage.

DATA SHEET

MATERIAL	T700 Superforce mimetic ocean
BLADE DIMENSION	786x190 mm
BLADE HARDNESS	25 soft - 30 medium - 40 hard
WATER RAILS	Costant h10
FINS ANGLE	29°+3°=32°
ENDING BLADE	concave NACA
FINS WEIGHT	Starting from 600 gr
FOOT POCKET	Mod. 300 - Color: blue
FOOT POCKET WEIGHT	316 gr circa in size 40/41
FOOT POCKETS SIZES	
<i>European sizes</i>	36/37 - 38/39 - 40/41 - 42/43 - 44/45 46/47 - 48/49
<i>US/Canada sizes</i>	4/4.5 - 5.5/6 - 7/8 - 8.5/9 - 10/11 11.5/12.5 - 13/14



CARBON FIBER
T700 SUPERFORCE

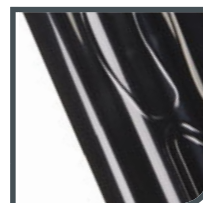


SURFER BLACK

Comfortable and light. The lightest plastic fin in the world. The SURFER, available in 3 new colors are extremely comfortable and versatile. As with all of the fins featuring the 300 foot pockets, the blades are removable. They are a great choice for entry-level freedivers. Color Black.

DATA SHEET

MATERIAL	High modulus plastic
BLADE DIMENSION	814x192 mm
BLADE HARDNESS	medium
FINS ANGLE	29°+3°=32°
ENDING BLADE	flap
FINS WEIGHT	647 gr in size 40/41
FOOT POCKET	Mod. 300 - Color: black
FOOT POCKET WEIGHT	316 gr circa in size 40/41
FOOT POCKETS SIZES	
European sizes	36/37 - 38/39 - 40/41 - 42/43 - 44/45 46/47 - 48/49
US/Canada sizes	4/4.5 - 5.5/6 - 7/8 - 8.5/9 - 10/11 11.5/12.5 - 13/14



SURFER WHITE

Comfortable and light. The lightest plastic fin in the world. The SURFER, available in 3 new colors are extremely comfortable and versatile. As with all of the fins featuring the 300 foot pockets, the blades are removable. They are a great choice for entry-level freedivers. Color White.

DATA SHEET

MATERIAL	High modulus plastic White
BLADE DIMENSION	814x192 mm
BLADE HARDNESS	medium
FINS ANGLE	29°+3°=32°
ENDING BLADE	flap
FINS WEIGHT	647 gr in size 40/41
FOOT POCKET	Mod. 300 - Color: White
FOOT POCKET WEIGHT	316 gr circa in size 40/41
FOOT POCKETS SIZES	
European sizes	36/37 - 38/39 - 40/41 - 42/43 - 44/45 46/47 - 48/49
US/Canada sizes	4/4.5 - 5.5/6 - 7/8 - 8.5/9 - 10/11 11.5/12.5 - 13/14



300 PLASTIC LINE

OPC4SURB

NEW

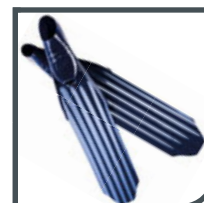
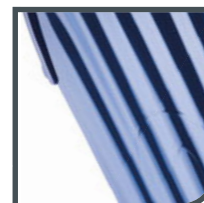
MADE IN ITALY

SURFER BLUE

Comfortable and light. The lightest plastic fin in the world. The SURFER, available in 3 new colors are extremely comfortable and versatile. As with all of the fins featuring the 300 foot pockets, the blades are removable. They are a great choice for entry-level freedivers. Color Blue.

DATA SHEET

MATERIAL	High modulus plastic Blue
BLADE DIMENSION	814x192 mm
BLADE HARDNESS	medium
FINS ANGLE	29°+3°=32°
ENDING BLADE	flap
FINS WEIGHT	647 gr in size 40/41
FOOT POCKET	Mod. 300 - Color: blue
FOOT POCKET WEIGHT	316 gr circa in size 40/41
FOOT POCKETS SIZES	
<i>European sizes</i>	36/37 - 38/39 - 40/41 - 42/43 - 44/45 46/47 - 48/49
<i>US/Canada sizes</i>	4/4.5 - 5.5/6 - 7/8 - 8.5/9 - 10/11 11.5/12.5 - 13/14



300 PLASTIC LINE

OPC4SURCA

NEW

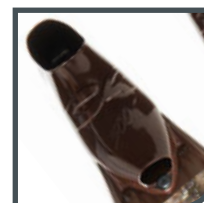
MADE IN ITALY

SURFER CAMU

Comfortable and light. The lightest plastic fin in the world. The SURFER, available in 3 new colors are extremely comfortable and versatile. As with all of the fins featuring the 300 foot pockets, the blades are removable. They are a great choice for entry-level freedivers. Color Camu.

DATA SHEET

MATERIAL	High modulus plastic Camu
BLADE DIMENSION	814x192 mm
BLADE HARDNESS	medium
FINS ANGLE	29°+3°=32°
ENDING BLADE	flap
FINS WEIGHT	647 gr in size 40/41
FOOT POCKET	Mod. 300 - Color: brown
FOOT POCKET WEIGHT	316 gr circa in size 40/41
FOOT POCKETS SIZES	
<i>European sizes</i>	36/37 - 38/39 - 40/41 - 42/43 - 44/45 46/47 - 48/49
<i>US/Canada sizes</i>	4/4.5 - 5.5/6 - 7/8 - 8.5/9 - 10/11 11.5/12.5 - 13/14

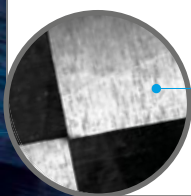
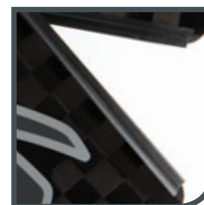


MUSTANG HT

A timeless legend. Since 2006, the year of their release on the market, they are the of technical fins best known and appreciated over time. Thanks to the unique and comfortable anatomical foot pockets and to the use of the finest HYPERTECH carbon fiber, these fins help minimize muscle fatigue.

DATA SHEET

MATERIAL	TR50 Hypertech
BLADE DIMENSION	870 x 200 mm
BLADE HARDNESS	25 soft - 30 medium - 40 hard
WATER RAILS	EVO variable profile (patent pending)
FINS ANGLE	29° + 3° = 32°
ENDING BLADE	flap
FINS WEIGHT	Starting from 600 gr
FOOT POCKET	Anatomical right and left - Color black
FOOT POCKET WEIGHT	Starting from 800 gr.
FOOT POCKETS SIZES	
European sizes	39/40 - 41/42 - 43/44 - 45/46 - 47/48
US/Canada sizes	7-7½ - 8-8½ - 11½ - 12 - 13-13½
UK sizes	6½-7 - 7½-8 - 8½-10 - 11-11½ - 12½-13



CARBON FIBER
TR50 HYPERTECH



400 T700 PERFORMANCE LINE OPC4500GH

NEW

MADE IN ITALY*

GECKO

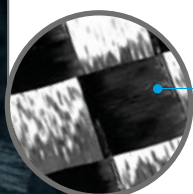
Gecko features, the new comfortable 400 Foot pockets paired with T700 Performance Line blades in a menacing camouflage finish. A new level of camouflage for spearfishing.

DATA SHEET

MATERIAL	T700 Performance CAMU3D
BLADE DIMENSION	870x195 mm
BLADE HARDNESS	25 soft - 30 medium - 40 hard
WATER RAILS	wr constant CAMU 3D
FINS ANGLE	29°+3°=32°
ENDING BLADE	concave NACA
FINS WEIGHT	Starting from 700 gr.
FOOT POCKET	Mod. 400 - Color black
FOOT POCKET WEIGHT	390 gr. In size 42/43
FOOT POCKETS SIZES	
European sizes	38/39 - 40/41 - 42/43 - 44/45 - 46/47
US/Canada sizes	5.5/6 - 7/8 - 8.5/9 - 10/11 - 11.5/12.5



* ONLY BLADES



CARBON FIBER
T700 Performance



FAST 400

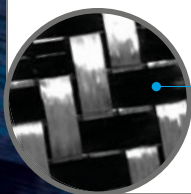
The FAST400 are the same as the C4 INDIAN but they feature the new 400 foot pockets. Versatile, easy to wear and light weight.

DATA SHEET

MATERIAL	T700 Superforce
BLADE DIMENSION	786x190 mm
BLADE HARDNESS	25 soft - 30 medium - 40 hard
WATER RAILS	constant h10
FINS ANGLE	22°+3°=25°
ENDING BLADE	concave NACA
FINS WEIGHT	Starting from 700 gr.
FOOT POCKET	Mod. 400 - Color black
FOOT POCKET WEIGHT	390 gr. In size 42/43
FOOT POCKETS SIZES	
European sizes	38/39 - 40/41 - 42/43 - 44/45 - 46/47
US/Canada sizes	5.5/6 - 7/8 - 8.5/9 - 10/11 - 11.5/12.5



* ONLY BLADES



CARBON FIBER
T700 SUPERFORCE



400 T700 PLASTIC LINE

OPC4500DO

NEW

DOLPHIN

Dolphin are C4's new entry level plastic blade fins. They are simple and efficient. They are comfortable as well as super versatile. They combine the advantages of comfort and ease of wearing of the 400 ultralight foot pocket with a mountable plastic blade. This is the best choice for entry level divers.

DATA SHEET

MATERIAL	High modulu plastic Black
BLADE DIMENSION	814x192 mm
BLADE HARDNESS	medium
WATER RAILS	-
FINS ANGLE	29°+3°=32°
ENDING BLADE	concave
FINS WEIGHT	Starting from 700 gr.
FOOT POCKET	Mod. 400 - Color black
FOOT POCKET WEIGHT	390 gr. in size 42/43
FOOT POCKETS SIZES	
<i>European sizes</i>	38/39 - 40/41 - 42/43 - 44/45 - 46/47
<i>US/Canada sizes</i>	5.5/6 - 7/8 - 8.5/9 - 10/11 - 11.5/12.5



SINGLE BLADES OBC4ALBHT

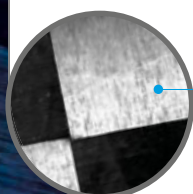
MADE IN ITALY

PALA REDFALCON HT

Carbon fiber blades made of high-quality HYPERTECH carbon fiber. They can be mounted on traditional foot pockets such as Mares Razor and Omersub Stingray.

DATA SHEET

MATERIAL	TR50 Hypertech
BLADE DIMENSION	865x207 mm
BLADE HARDNESS	25 soft - 30 medium - 40 hard
WATER RAILS	constant h10
FINS ANGLE	29°
ENDING BLADE	concave
SUITABLE FOR FOOT POCKETS:	- C4: Mod. 300 e 400 (using kit adapter) - Mares: Mod. Razor - Omer: Mod. Stingray and Eagleray



CARBON FIBER
TR50 HYPERTECH



SINGLE BLADES OBC4BFHT

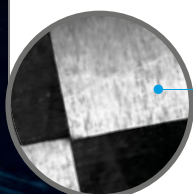
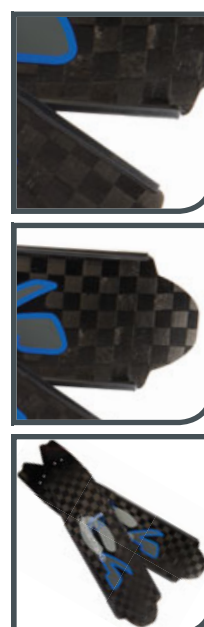
MADE IN ITALY

BLUEFLAP HT

Carbon fiber blades made of high-quality HYPERTECH carbon fiber. They can be mounted on traditional foot pockets such as Mares Razor and Omersub Stingray.

DATA SHEET

MATERIAL	TR50 Hypertech
BLADE DIMENSION	890x207 mm
BLADE HARDNESS	25 soft - 30 medium - 40 hard
WATER RAILS	constant h10
FINS ANGLE	29°
ENDING BLADE	flap
SUITABLE FOR FOOT POCKETS:	- C4: Mod. 300 e 400 (using kit adapter) - Mares: Mod. Razor - Omer: Mod. Stingray and Eagleray



CARBON FIBER
TR50 HYPERTECH

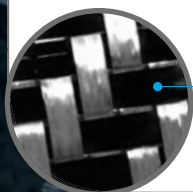
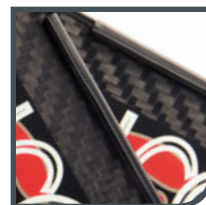


FALCON

Carbon fiber blades made of T700 SUPERFORCE carbon fiber. They can be mounted on traditional foot pockets such as Mares Razor and Omer's Stingray

DATA SHEET

MATERIAL	T700 Superforce
BLADE DIMENSION	790x190 mm
BLADE HARDNESS	25 soft - 30 medium - 40 hard
WATER RAILS	constant h10
FINS ANGLE	22°
ENDING BLADE	concave
SUITABLE FOR FOOT POCKETS:	- C4: Mod. 300 e 400 (using kit adapter) - Mares: Mod. Razor - Omer: Mod. Stingray and Eagleray



CARBON FIBER
T700 SUPERFORCE



FOOT POCKET MUSTANG

Mustang left and right anatomical foot pockets. These comfortable foot pockets already have a great reputation on the market. They are specifically designed for Mustang HT blades.

DATA SHEET

MODEL	left and right anatomical
WEIGHT	Starting from 600 gr.
FOOT POCKET ANGLE	3°
SIZES	
<i>European sizes</i>	39/40 - 41/42 - 43/44 - 45/46 - 47/48
<i>US/Canada sizes</i>	7-7½ - 8-8½ - 11½ - 12 - 13-13½
<i>UK sizes</i>	6½-7 - 7½-8 - 8½-10 - 11-11½ - 12½-13
SUITABLE FOR:	All C4 blades model made for this type of foot pockets.



AVAILABLE COLORS



SCARPETTA 300

300 are the lightest traditional foot pockets in the world. They are extremely light, comfortable, performing, resistant, hydrodynamic and captivating in their shiny colors. They can easily be considered the most advanced model in the latest generation of foot pockets.

DATA SHEET

MODEL	300
WEIGHT	316 gr in size 40/41
FOOT POCKET ANGLE	3°
SIZES	
<i>European sizes</i>	36/37 - 38/39 - 40/41 - 42/43 - 44/45 - 46/47 - 48/49
<i>US/Canada sizes</i>	4/4.5 - 5.5/6 - 7/8 - 8.5/9 - 10/11 - 11.5/12.5 - 13/14
SUITABLE FOR:	All C4 blades model made for 300 and 400 foot pockets.



AVAILABLE COLORS



FOOT POCKETS OSC4500

NEW

FOOT POCKET 400

We're particularly proud of the new 400 foot pockets. They are manufactured in thermoplastic rubber and thanks to their unique design they only weigh 390 grams. 400 are the lightest thermoplastic rubber foot pockets on the market today. The ergonomic design is typical of our C4 style. They feature a preformed angle of 3 degrees to enhance comfort and efficiency.

DATA SHEET

MODEL	400
WEIGHT	Starting from 600 gr.
FOOT POCKET ANGLE	3°
SIZES	
<i>European sizes</i>	38/39 - 40/41 - 42/43 - 44/45 - 46/47
<i>US/Canada sizes</i>	5.5/6 - 7/8 - 8.5/9 - 10/11 - 11.5/12.5
SUITABLE FOR:	All C4 blades model made for 300 and 400 foot pockets.

AVAILABLE COLORS



OSC4500N...



FINS ACCESSORIES OKAC4300

KIT ADAPTER

Specific adapter kit designed to allow assembly of 300 and 400 foot pockets on models of blades with fitting shape like "Omer Stingray" and / or "Mares Razor". Included in the package, there are detailed explanations on how to use this particular kit.



MADE IN ITALY

ACCESSORIES

KIT WATER RAILS

MADE IN ITALY

KIT WATER-RAILS COSTANT (MT.) OKC4WRC



KIT WATER-RAILS TUNNEL OKC4WRTU



KIT WATER-RAILS EVO OKC4WREVO



MASKS & SNORKELS

OMAC4PL

NEW

MASK PLASMA

Plasma is a mask specifically designed for freediving and deep spearfishing. Plasma features an incredibly wide field of vision and extremely reduced internal volume. The geometry of the lenses positions the glass closer to the eyes and guarantees excellent visibility and a low inner volume..

- Mask Skirt made in soft silicone with a variable thickness.
- Anatomical adjustable silicone strap
- Ultra resistant tempered glass



DATA SHEET

MATERIAL	Soft and comfortable silicone
----------	-------------------------------

AVAILABLE COLORS



OMAC4PLN



OMAC4PLB



OMAC4PLCA

MASKS & SNORKELS

OSNC4MI

NEW

SNORKEL MISTRAL

Mistral is a snorkel specifically designed for freediving and spearfishing. It features an anatomical bite in non-allergenic silicone for long use. The tube is molded in two different materials with a different hardness. The central part of the tube is made in semi-rigid thermoplastic and the upper part of the snorkel is made in a softer more flexible material.

AVAILABLE COLORS



OSNC4MI



OSNC4MI



OSNC4MI



SPEARGUN GRAPHITE

Graphite is a carbon fiber monocoque speargun that can feature single or double circular bands and shafts with a diameter from 6.2 to 7 mm. The trigger mechanism is behindhand, with the exclusive Shaft-Slider system and anatomical small/big, right and left handles. It is mechanically very efficiency with a low friction, maximum handling and high rigidity. It is extremely easy to service.

ART.	MOD.	MUZZLE
OFC4GRA132	GRAPHITE 132	1-2 circular
OFC4GRA116	GRAPHITE 116	1-2 circular
OFC4GRA99	GRAPHITE 99	1-2 circolari
OFC4GRA83	GRAPHITE 83	1-2 circolari

DATA SHEET

MATERIAL	100% Carbon fiber MEGAFORCE T700
EQUIPPED BY	<ul style="list-style-type: none"> - T700 carbon fiber monocoque - trigger mechanism Auto-R with integrated line release - muzzle for circular bands - mechanics in AISI 316 - reel MPL55 - double adjustable handle right or left - integrated guide rail.



SPEARGUN URUKAY

Urukay can feature double or triple circular bands and shafts from 7 to 8 mm. The trigger mechanism is behindhand and it has a shaft guide and bands elevator. Excellent handling in relation to the high mass.

ART.	MOD.	MUZZLE
OFC4URK120	URUKAY 120	2-3 circular
OFC4URK105	URUKAY 105	2-3 circular
OFC4URK90	URUKAY 90	2-3 circular

DATA SHEET

MATERIAL	100% Carbon fiber MEGAFORCE T700
EQUIPPED BY	<ul style="list-style-type: none"> - T700 carbon fiber monocoque - trigger mechanism Auto-R with integrated line release - muzzle for circular bands - mechanics in AISI 316 - reel MPL55 - double adjustable handle right or left - integrated guide rail



BAG OBAGC4FBVO



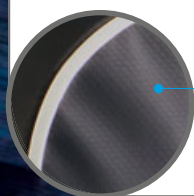
TOP BAG VOLARE

Large bag specifically designed for freediving equipment. Being the longest bag on the market today, it can carry any model of freediving fin. It also features enough room to carry a wetsuit, neoprene gloves and socks.

- Internal neoprene pocket insert to protect the fin tips during travel.
- External pocket to fit all accessories such as masks, snorkels and knives.
- Double slider zipper with adjustable shoulder straps.

DATA SHEET

MATERIAL	Tarpaulin waterproof tear resistant
DIMENSIONS	L121cm x W33 cm x D20 cm



TARPAULIN
WATERPROOF
TEAR RESISTANT



INTERNAL
NEOPRENE POCKET

BAG OBAGC4FBST



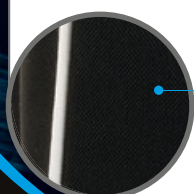
STANDARD FIN BAG

Backpack specifically designed for freediving fins featuring an external zippered pocket for carrying masks, snorkels, knives.

- Double slider zipper.
- Adjustable shoulder straps.

DATA SHEET

MATERIAL	Nylon waterproof tear resistant
DIMENSION	L105cm x W 30 cm x D20 cm



NYLON
WATERPROOF
TEAR RESISTANT



BELT
OBELTC4MAIN
NEW
MARSIGLIESE BELT

Silicone rubber belt featuring a quick release Marseillaise style stainless steel buckle. This belt is highly superior to all other traditional natural rubber made diving belts. The silicone used is extremely elastic and very resistant to salt water and sunlight.

DATA SHEET

MATERIAL	Silicone
DIMENSIONS	<ul style="list-style-type: none"> • Length: 1.45 m • height: 50 mm • thickness: 5.0 mm
MAXIMUM EXTENSION	570%
TEMPERATURE OF USE	-70°C to +200°C


AVAILABLE COLORS

OBELTC4MAINN

OBELTC4MAINW

OBELTC4MAINBR
BELT
OBELTC4MAIN
NEW
BELT NYLON BUCKLE

This belt has the same great features of the Marsiglese belt but it is assembled with a thermoplastic buckle.

DATA SHEET

MATERIAL	Silicone
DIMENSIONS	<ul style="list-style-type: none"> • Length: 1.40 m • height: 50 mm • thickness: 3.0 mm
MAXIMUM EXTENSION	770%
TEMPERATURE OF USE	-70°C to +200°C


AVAILABLE COLORS

OBELTC4NYN

OBELTC4NYW

OBELTC4NYBR



C4 Srl

Via Cesare Battisti, 40
20847 Albiate (MB) ITALY
Ph. +39.0362.1573081
info@c4carbon.com

C4CARBON.COM